

# LAFORTE Maxima

Digital solutions for large volume printing



# Our difference

Why choose LaForte?

## Exceptional production capacity

for printing medium volumes

## Premium built

Quality materials with outstanding performance mechanics

## Dual module heads

- Dual channel: 2 colors per head
- Excellent speed & precise jetting
- Significantly reduced maintenance cost due to number of heads

## Upgradable technology & flexibility

- Head count adjustable from between 2 to 8
- Keep the printer, change the software and features: the machine grows with your business

## Integrated printing solutions

Software + hardware + ink + media

## International team of experts

Our team listens and understands your needs offering cost effective consultancy and solutions

# Our printing results

What's the LaForte advantage?

## High definition printing

- Maximum resolution of 1200 DPI
- Variable drop technology

## Accurate printing: quality and precision

- Simplify head alignment for maximum precision
- Individual head adjustments: slant and stagger
- Precise belt feeding movement
- Feed accuracy less than 20 microns

## Consistant printing results

- Advanced control software accentuates the clearness of the output, reducing the dithering effect
- Advanced matrix dot layout guarantees an exceptional yield



2017– Future textile awards:  
**LaForte best innovation**  
industrial textiles



### Printing technology

Variable drop inkjet from 4pl a 72pl  
(2.656 nozzles - 2 colours)



### Ink tank capacity

5/10 litres (double tank)



### Compressed air consumption

6–8 bar - 250 L/min



### Interface

Ethernet 1 GB



### Necessary operating conditions

Temperature 20° C–24° C (68° F–76° F)  
Humidity 50–65%



### Water consumption

25–50 L/h



### Media feeding mechanism

Rotary stiky belt system

## Printer model and specs



4680

### POWER SETTINGS

16 kVA / 3 phases+neutral /  
380–420V ±10% / 26A

### DIMENSIONS

4680×2300×h 2400 mm

### WEIGHT

2.800 kg



5080

### POWER SETTINGS

16 kVA / 3 phases+neutral /  
380–420V ±10% / 26A

### DIMENSIONS

5080×2300×h 2400 mm

### WEIGHT

3.000 kg



6180

### POWER SETTINGS

19 kVA / 3 phases+neutral /  
380–420V ±10% / 26A

### DIMENSIONS

6180×2300×h 2400 mm

### WEIGHT

4.500 kg

# Our mechanics makes the difference

How does it work?

## Boundless variety of applications

Print on a wide selection of fabrics with optimal results: polyester, cotton, viscose, silk, lycra, wool, canvas and much more.

## Solid aluminum frame

Eliminates vibration, guaranteeing a stable print and a long life with no rust

## Heavy-duty carriage

- Laser cut heads stage
- External electronics
- Optical fiber cable

## Stable ink sub-tank

- System for negative pressure control
- Separate ink pressure per single channel
- Pressure sensor for auto-correcting pressure stability
- External sensor for determining ink level

## Reliable & precise motion

- Manually assembled in house
- Magnetic linear motor and double rail for carriage stability
- Aluminum bridge 0.02 mm torsion/deflection
- 300 kg bridge weight
- Head crash safety plates

## Anti mist aspiration system

- No contamination on printer
- Healthier environment for the operator

## Feeding & auto switch ink system

- Eliminates downtime for manual ink change: auto ink switch when empty
- 10 kg per color
- No ink is wasted
- Rapid connector - Easy to operate

## Practical washing unit

- Detachable washing unit
- Easy to clean for less downtime
- Spiral Brush to prevent dirt accumulation
- Triple squeegees

## Touch panel

- Front and back side
- User friendly interface
- Print queue manager
- IoT Maintenance Section
- Remote assistance

## Front dryer & take up

- Micro weave ceramic lamp for low energy consumption
- Compact
- Huge reduction on exhaust smoke
- Continuous tension and roll alignment

## Printing resolution



## Supports

Fabrics

## Ink

Reactive, acid, pigment, direct sublimation, direct disperse

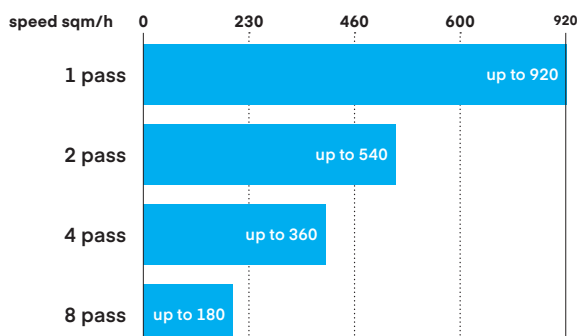
## Number of colors



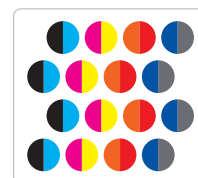
## Speed\*

### LAFORTE Maxima 16k

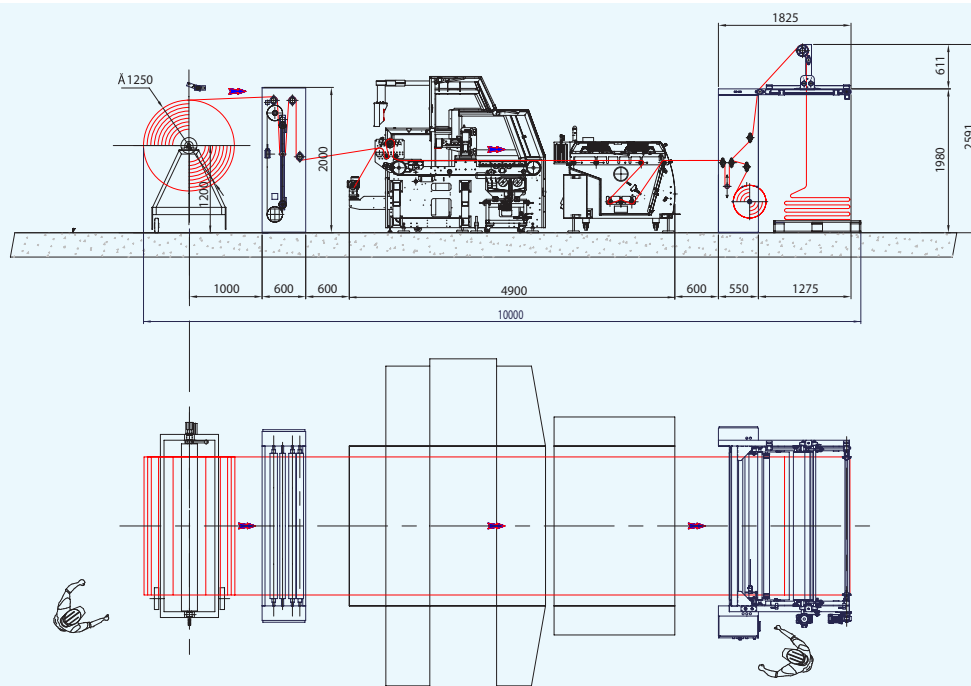
16 print heads staggered on 4 lines



2x4/4/6/8 colours  
8-16 heads  
3-4 row



\*Depending on complexity, coverage and quality required.



Example of a configuration for all models, specifics and details to be inserted.

- Accessories are an optional
- Example of a full line configuration

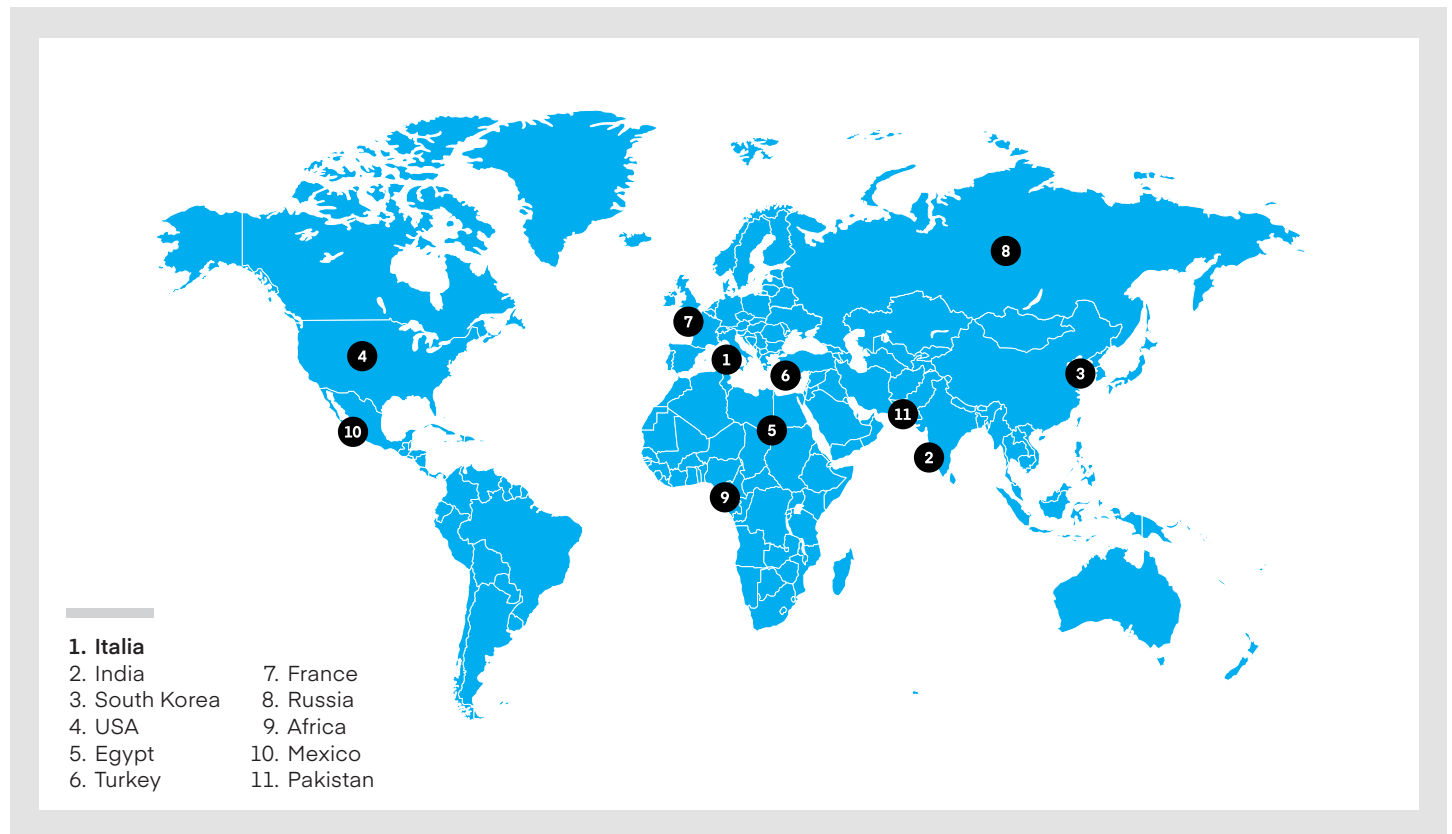
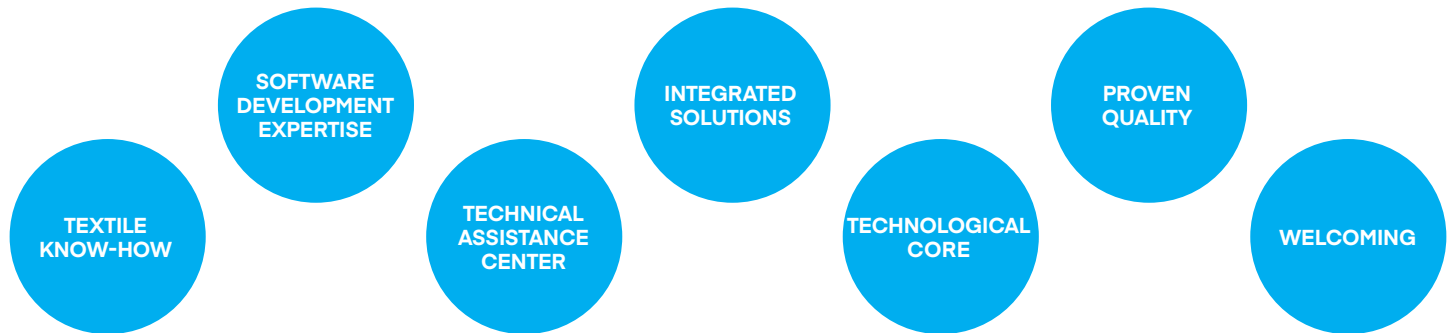
# Aleph

In printing, we care

Founded in 1999 in Como, in the heart of Italian textiles district, Aleph has become an **international player in digital printing solutions with a dedicated sales force and a distribution network** located in key textile markets. Aleph's **extensive know-how in high quality proprietary printing software and the experience gained with major textile companies**, have allowed the company to become a manufacturer of **technologically advanced inkjet**

**digital printers**. From high-tech digital printers to drying systems, from proprietary software to consumables, **Aleph is able to offer integrated printing solutions to their clients in order to become a partner for their success**. Thanks to its **customer-centered approach, cost-effective solutions and the expert service**, Aleph aims to ensure the clients the maximum return on their investments.

## Our values



## Our office

### Aleph Srl

Via Giotto, 26  
22075 Lurate Caccivio (CO)  
T. +39 031 575902  
F. +39 031 3385098

[www.alephteam.com](http://www.alephteam.com)  
[info@alephteam.com](mailto:info@alephteam.com)

